

## Exchange Programme Fact Sheet



City centre and Kauppi campuses  
Autumn semester 2019

Erasmus code:  
SF TAMPERE17

### Postal address

Tampere University  
International Mobility Services,  
PO Box 607  
FI-33014 Tampere University, FINLAND

### International Mobility Services

tel. +358 50 318 7833 and +358 50 318 6006  
mobility.tau@tuni.fi  
[www.tuni.fi/en/study-with-us/exchange-studies](http://www.tuni.fi/en/study-with-us/exchange-studies)

### Visiting address

Kalevantie 4  
33100 Tampere

### Telephone

+358 294 5211 (switchboard)

### Team Leader

Ms Laura Lalu  
laura.lalu@tuni.fi

### University merger

University of Tampere and Tampere University of Technology merged in January 2019. Thus, the name also changed to Tampere University. Tampere Universities (in plural) consists of Tampere University and Tampere University of Applied Sciences, forming a new multidisciplinary community with competitive edges in technology, health and society.

## Application and nomination deadlines

### Autumn semester 2019

Nomination 15 April  
Application 30 April

### Spring semester 2020

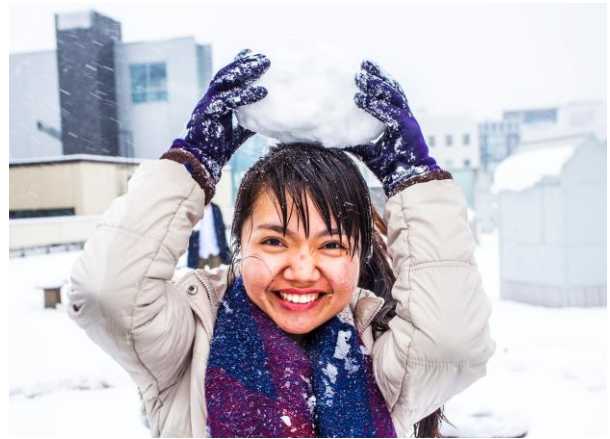
Nomination 30 September  
Application 15 October

### Nomination

The applicants must be [officially nominated](#) (link) by their home university or student exchange programme.

Email your nominations to [mobility.tau@tuni.fi](mailto:mobility.tau@tuni.fi).

The online application form link will be sent to the nominated students by email.



### Application procedure

- Application, study plan [and other required documents](#) are processed **online only**.
- The acceptance decisions are made approximately one month after the application period has ended.
- Acceptance of exchange students is made by the host faculty. The successful applicants will receive an electronic letter of acceptance.

### Language requirements

The required level of knowledge of English is **B2** on [Common European Framework of Reference for Languages \(CEFR\)](#), or **C1** for the Degree Programme in English Language, Literature and Translation. [Read more](#)

We accept the following certificates:

- TOEFL, IELTS Academic, PTE Academic
- Certificate of knowledge of English written by university staff, preferably your English teacher

### Courses

Tampere University offers [a wide selection of courses taught in English](#). Exchange students can take courses from all faculties **in the City centre and Kauppi campuses** (with the exception of Faculty of Medicine on Kauppi campus). We recommend selecting the majority of the courses from the host faculty. Acceptance to courses of other faculties cannot be guaranteed.

Despite the university merger in January 2019, the course selection still follows the former distinction of having three separate universities. There are also courses open to students from all campuses on the [Cross-Campus Study Service](#). Courses in Finnish language from beginner to advanced level are also available.

Students are responsible themselves for the prerequisites of the courses. Thesis or a project work requires a special arrangement.

## Registration

Students are required to enrol at the Student Affairs Office and bring the documents listed in the Letter of Acceptance with them. The registration materials are available at the International Mobility Office.

Students can enrol for the courses after they have registered at the University.

All new international students are required to attend the Welcome Week.

## Academic calendar 2019–2020

The academic year is divided into two semesters consisting of two periods each.

### Autumn semester 2019 (19 Aug – 31 Dec)

- Welcome Week 19 Aug – 24 Aug
- Period I 26 Aug – 20 Oct
- Period II 21 Oct – 20 Dec
- Christmas break 21 Dec – 31 Dec

### Spring semester 2020 (2 Jan – 31 May)

- Welcome Week 2 Jan – 3 Jan
- Period III 7 Jan – 1 Mar
- Period IV 2 Mar – 31 May

## Student Union of Tampere University (TREY)

Exchange students are encouraged to join the student union [TREY](#) (membership fee 58 € for one semester, or 116 € for the academic year in 2018–2019). Members are entitled to the student health care services and receive an official student card (preparation cost 10 €) which entitles them to various other services and discounts. Doctoral students' membership fee is lower as they are not entitled to health care services or travel discounts.

## Student housing

Student housing is mainly administrated by the [Tampere Student Housing Foundation \(TOAS\)](#). TOAS tenancy agreements are always fixed-term (August–December and/or January–May) and cannot be terminated mid-semester.

The rent in a student apartment varies between 250–400 € per month. These are usually two or three-bedroom apartments where the student has a single study-bedroom and shares the kitchen and the bathroom with other students. The laundry facilities are located in the basement of each building.

Student apartments are equipped only with basic furniture including a bed with a mattress, a desk and a chair, a shelf and a kitchen table with chairs. A wireless network is included in the rent.

## Cost of living

Cost of living in Finland is comparable to the rest of Northern Europe. In addition to the rent, approximately 300–500 € per month covers food, transportation, personal and leisure expenses. Meals at student restaurants are varied and inexpensive (2.60 €).



We are proud of the university facilities and the city of Tampere and Finland. We trust your students are going to love studying in Tampere – a vibrant student city with plenty of attractions, activities and fun.

### Facilities and Services

- Orientation period (known as the Welcome Week) in the beginning of both semesters
- Trained and helpful student tutors
- University library services and computer classrooms
- Excellent sports facilities at campus
- Student activities arranged by a multitude of student organisations, including trips and excursions organised by ESN FINT

### Tampere

[www.visittampere.fi](http://www.visittampere.fi)

- 220,000 inhabitants, the third largest city in Finland and the largest inland city in the Nordic countries
- A true student city: every sixth resident is a student
- A vibrant atmosphere: 8,000 events and festivals each year
- Home of the world's only Moomin Museum
- The [Sauna Capital of the World](#) with over 20 public saunas!
- Frequently voted the best Finnish city in terms of quality of life

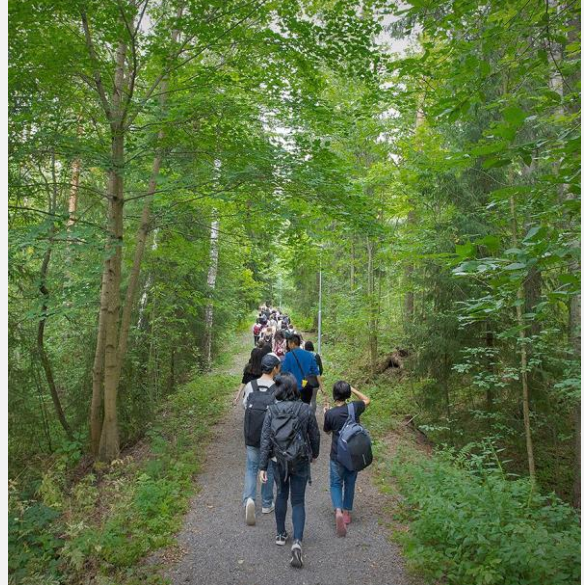
### Finland

[www.visitfinland.com](http://www.visitfinland.com)

- Safe country with an amazing natural environment: 188,000 lakes and 37 national parks
- Over 2 million saunas – there is even one in the Parliament House!
- The place to see Aurora Borealis, also known as the Northern Lights
- The land of crazy sports like swamp soccer, ice swimming, wife-carrying and many more
- ... but no, we don't have polar bears

**Human  
Potential  
Unlimited.**

## Tampere Summer School



[Tampere Summer School](#) (1–16 August) offers a great selection of 20 inspiring courses covering various academic fields and up-to-date topics. It is also a great way to enjoy the Finnish summer and meet other students from all over the world!

Courses are free of charge for all new exchange students arriving for autumn semester.

All courses are taught in English. The application period is 1 April – 15 May, 2019.

We are looking forward to having your students with us in Tampere!

## Exchange programme and institutional agreement coordinators

**Ms Laura Lalu**  
Team Leader, Erasmus+ Institutional Coordinator  
Tel. +358 50 318 6858  
laura.lalu@tuni.fi

**Ms Heidi Fordell**  
Erasmus+ Mobility Coordinator  
Tel. +358 40 190 9737  
heidi.fordell@tuni.fi

**Mr Jani Kohonen**  
Coordinator of International Education  
Bilateral exchange (institutional-level agreements): Asia, Latin America  
Tel. +358 50 437 7361  
jani.kohonen@tuni.fi

**Mr Igor Tanskanen**  
Coordinator of International Education  
Bilateral exchange (institutional-level agreements): USA, Canada, Russia, Africa, Germany, Austria. ISEP, north2north and BCI programmes.  
Tel. +358 50 437 7450  
igor.tanskanen@tuni.fi

**Ms Mira Kauppinen**  
Planning Officer  
Nordplus, Nordlys student and teacher mobility  
Tel. +358 40 849 0486  
mira.kauppinen@tuni.fi

**International Adviser for incoming exchange students**  
mobility.tau@tuni.fi

## Mobility coordinators at faculties

**Ms Terhi Nieminen**  
Faculty of Management and Business:  
Business and Administrative studies  
Tel. +358 40 190 1480  
terhi.nieminen@tuni.fi

**Ms Minna Höijer**  
Faculty of Management and Business: Politics  
Tel. +358 50 318 6604  
minna.hoijer@tuni.fi

**Ms Mira Pihlström**  
Faculty of Information Technology and Communication Sciences:  
Languages and Translation studies, Intercultural Communication Studies  
Tel. +358 50 318 6692  
mira.pihlstrom@tuni.fi

**Ms Anna Vähämäki**  
Faculty of Information Technology and Communication Sciences:  
Communication, Journalism, Media and Theatre, Computer Sciences, Mathematics, Statistics, Information Studies and Interactive Media  
Tel. +358 50 318 6639  
anna.vahamaki@tuni.fi

**Ms Sari Hyttinen**  
Faculty of Education and Culture: Educational Studies  
Tel. +358 40 190 1530  
sari.hyttinen@tuni.fi

**Ms Tarja Lehto**  
Faculty of Medicine and Health Technology: Medicine  
Tel. +358 40 190 1249  
tarja.lehto@tuni.fi

**Ms Riitta Aallos**  
Faculty of Medicine and Health Technology: Biotechnology  
Tel. +358 50 318 6377  
riitta.aallos@tuni.fi

**Ms Catarina Stähle-Nieminen**  
Faculty of Social Sciences: Health Sciences  
Tel. +358 40 190 1664  
catarina.stahle-nieminen@tuni.fi

**Ms Anna Wansén-Kaseva**  
Faculty of Social Sciences:  
Social Sciences and Social Work, Literary Studies, History, Philosophy, Psychology, Logopedics  
Tel. +358 50 396 9642  
anna.wansen-kaseva@tuni.fi