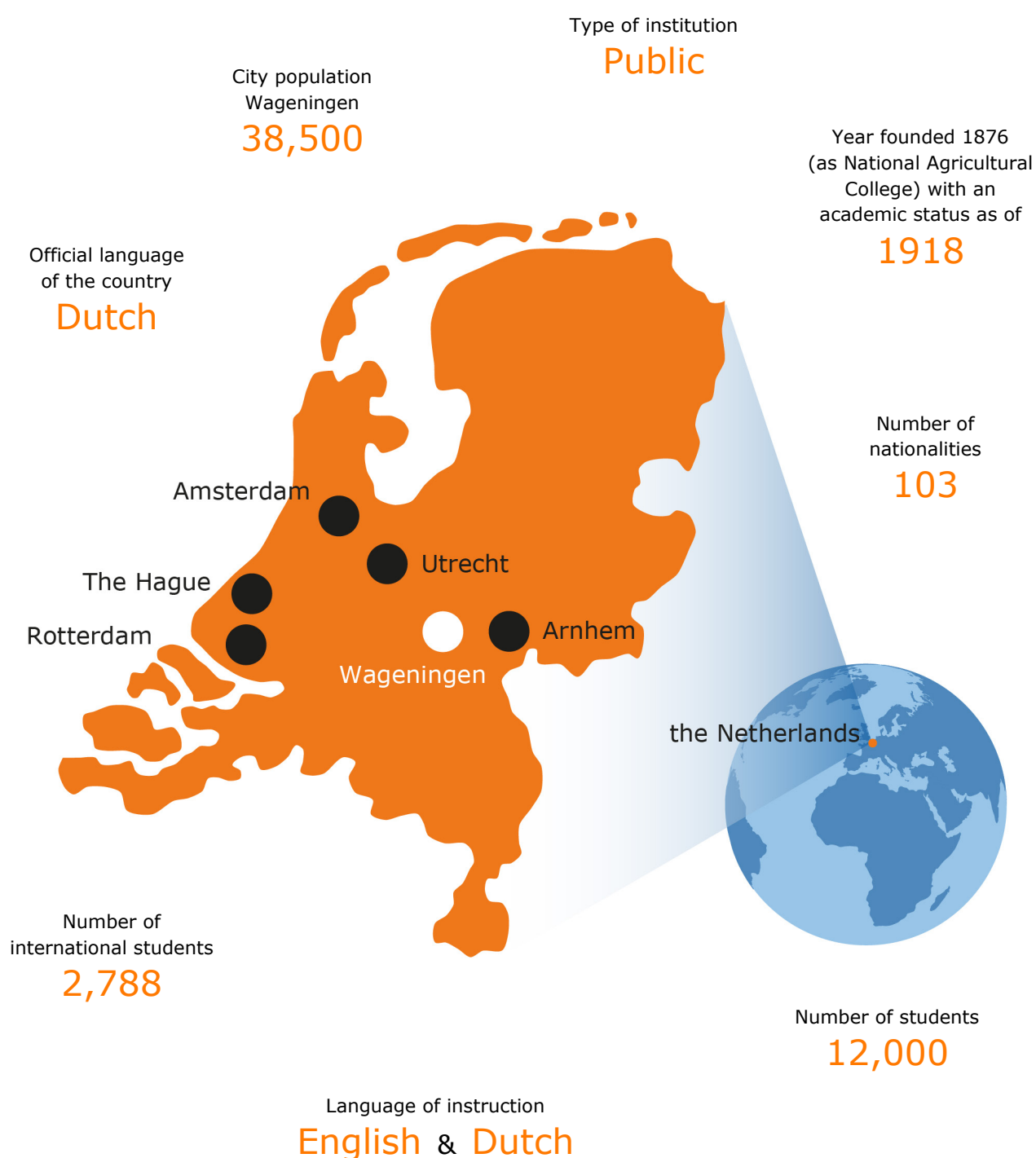


# Student Exchange

Fact sheet 2019-2020

## Wageningen University & Research



---

## Academic calendar and dates

The academic year is divided in six periods. The Autumn term (September) consists of period 1 to 3 and the Spring term (February) consists of period 4 to 6.

### Calendar academic year 2019-2020

Deadlines	Study period	Preparation week and (re)exams
	<i>Orientation week/Annual Introduction Days</i>	16/08/2019 – 21/08/2019
May 1 <sup>st</sup>	1:	02/09/2019 – 25/10/2019 14/10/2019 – 25/10/2019
May 1 <sup>st</sup>	2:	28/10/2019 – 20/12/2019 09/12/2019 – 20/12/2019
	Christmas Holidays:	23/12/2019 – 03/01/2020
October 15th	3:	06/01/2020 – 31/01/2020
	<i>Orientation week/Annual Introduction Days</i>	
October 15th	4:	17/02/2020 – 13/03/2020
October 15th	5:	16/03/2020 – 08/05/2020 27/04/2020 – 08/05/2020
October 15th	6:	11/05/2020 – 03/07/2020
	Summer Holidays:	06/07/2020 – 28/08/2020 03/08/2020 – 14/08/2020*
		* (Note: dates are subject to change)

Orientation week (Annual Introduction Days): see [www.aidwageningen.nl/en](http://www.aidwageningen.nl/en)

## Academic

### Academic Field

Faculty of Life Sciences

### Course descriptions

Study Handbook: [www.wur.eu/studyhandbook](http://www.wur.eu/studyhandbook)

### ECTS

General course: 6 ECTS

Full year load: 60 ECTS

### Classes conducted in English

Most 2<sup>nd</sup> and 3<sup>rd</sup> year BSc classes are in English.

All MSc classes are in English.

### Minors

Wageningen University & Research has 37 minors in English.

Check them here: [www.wur.eu/listofminors](http://www.wur.eu/listofminors)

---

---

## Eligibility for exchange

### Inter-institutional agreement

There should be an inter-institutional agreement for Student Mobility for Study (SMS) between the home university and Wageningen University & Research.

### Registration

Exchange students should be registered as a regular student at one of the partner universities.

### General course requirements

A minimum of 120 ECTS should have been completed before the exchange, which equals at least two years of study at the home university/academic background.

### English proficiency (minimum scores)

- TOEFL internet-based: 80
- IELTS : 6.0
- Cambridge Certificate of Advanced English: C
- Cambridge First Certificate: B
- Cambridge Certificate of Proficiency in English: C
- German Abitur: 06
- Belgian ADO or TSO: 60
- International Baccalauréat: 3

### Other requirements

Students must fulfil course requirements (Assumed Knowledge in course descriptions)

## Application procedure

Detailed information about the exchange application procedure at Wageningen University & Research (WUR), deadlines and how to select courses can be found on our exchange website: [www.wur.eu/incoming](http://www.wur.eu/incoming)

Students have to be nominated for exchange by the coordinator from their home university.

For students who start their exchange in September is the nomination deadline April 15<sup>th</sup> and the application deadline May 1<sup>st</sup>. For students who start in January or later: the nomination deadline is October 1<sup>st</sup> and the application deadline is October 15<sup>th</sup>.

## Estimated monthly expenses

Rent of student accommodation	Health insurance and legal liability insurance	Groceries	Books and study materials	Total
				
€ 300 - € 500	€ 75	€ 300	€ 200 per year	About € 900 per month

---

---

## Housing

As we have a shortage of housing, the number of rooms allocated to exchange students is very limited. In most cases housing is guaranteed for non-EU students because of immigration rules. Unfortunately, EU students we cannot offer a student room. We would recommend to register for a room via [www.room.nl](http://www.room.nl)

## Immigration information

For some incoming students, Wageningen University & Research needs to apply for a MVV entry visa and/or residence permit (VVR) after admittance (students should not start procedures themselves). The International Office of the Student Service Centre (SSC) from Wageningen University & Research will send the application for entry visa (MVV) and/or residence permit (VVR) to the immigration authorities (IND). The dues for this procedure are €171 (2019). In this table can be checked which permit(s) are needed.

Country of origin	MVV entry visa needed?	Residence permit needed?	Working permit needed?
EU/EFTA countries	NO	NO	NO
Romania and Bulgaria	NO	NO (registration with IND is advised)	NO
Australia, Canada, Japan, Monaco, New-Zealand, South Korea, USA, Vatican City	NO	YES	YES
All other countries	YES	YES	YES

## Social life

### Annual Introduction Days



[www.aidwageningen.nl/en](http://www.aidwageningen.nl/en)

### International Exchange Erasmus Student Network



[www.ixesn-wageningen.nl](http://www.ixesn-wageningen.nl)

### Student Associations and Sports



[www.wur.eu/associations](http://www.wur.eu/associations)



[www.facebook.com/wageningenuniversity](http://www.facebook.com/wageningenuniversity)



[www.youtube.com/wageningenuniversity](http://www.youtube.com/wageningenuniversity)



[instagram.com/uniwageningen](http://instagram.com/uniwageningen)



[www.twitter.com/uniwageningen](http://www.twitter.com/uniwageningen)



[www.pinterest.com/uniwageningen](http://www.pinterest.com/uniwageningen)



[nl.linkedin.com/school/wur](http://nl.linkedin.com/school/wur)

---

---

# International office for student exchange & study abroad

## Institutional exchange coordinator

Contact for international and European partners, Study Abroad Advisors and Exchange co-ordinators for negotiation and development of exchange agreements, study abroad and exchange policy, strategy and organisation of student exchange.

**Student Service Centre (SSC)**  
Forum (building 102) | room C059B  
Droevendaalsesteeg 2  
P.O. Box 414 | 6700 AK Wageningen  
the Netherlands  
T +31 317 48 25 95  
E office.studentexchange@wur.nl



**Drs. Esther Heemskerk**  
*Student Exchange International Office*

## Departmental exchange coordinator

Contact for individual applications for student exchange (incoming and outgoing)

**Environmental Sciences**  
Gaia (building 101) | room B113  
Droevendaalsesteeg 3  
6708 PB Wageningen | the Netherlands  
T +31 317 48 27 74  
E environmentalsciences.studentexchange@wur.nl



**Drs. Dennis Duindam**  
*Erasmus+ coordinator*  
*Department of Environmental Sciences*

Contact for:  
Australia and New Zealand

**Social Sciences**  
Leeuwenborch (building 201) | room 0104  
Hollandseweg 1  
P.O. Box 8130 | 6700 EW Wageningen  
the Netherlands  
T +31 317 48 27 43  
E socialsciences.studentexchange@wur.nl



**Ing. Marita van den Bergh**  
*Erasmus+ coordinator*  
*Department of Social Sciences*

Contact for:  
USA, South Africa, South America

**Life Sciences** (animal & plant sciences, biology)  
Forum (building 102) | room C053  
Droevendaalsesteeg 2  
P.O. Box 414 | 6700 AK Wageningen  
the Netherlands  
T +31 317 48 25 95  
E lifesciences.studentexchange@wur.nl



**Drs. Hanna Gooren**  
*Erasmus+ coordinator*  
*Department of Life Sciences*

Contact for:  
Canada & Israel

**Technology and Nutrition**  
Forum (building 102) | room C053  
Droevendaalsesteeg 2  
P.O. Box 414 | 6700 AK Wageningen  
the Netherlands  
T +31 317 48 25 91  
E technology.studentexchange@wur.nl



**Ir. Ellen de Jong**  
*Erasmus+ coordinator*  
*Department of Technology & Nutrition*

Contact for:  
Singapore, China, Japan

---

---

## Erasmus administrator

Contact for administrative matters and organisation of student exchange & Erasmus scholarships

---

**Student Service Centre (SSC)**  
Forum (Building 102) | room C057D  
Droevendaalsesteeg 2  
P.O. Box 414 | 6700 AK Wageningen,  
the Netherlands  
T +31 317 48 57 99  
E [erasmus.studentexchange@wur.nl](mailto:erasmus.studentexchange@wur.nl)



**Marleen Domburg MSc**  
*Student Exchange International Office*



**Drs. Lian van Lumig**  
*Student Exchange International Office*



**Brenda Brouwer BSc**  
*Student Exchange International Office*



**Daisy Bravo Delgado MSc**  
*Student Exchange International Office*



**Lisa Nguyen MSc**  
*Student Exchange International Office*



**Eline van Remortel BSc**  
*Student Exchange International Office*

---

---

### Student Service Centre

#### General contact information

Erasmuscode

Postal addresss

Nomination and applications

Website

#### Wageningen University & Research

NL WAGENIN01

International Office – Student Exchange

Droevendaalsesteeg 2 | 6708 PB Wageningen | the Netherlands

Should be send to: [application.studentexchange@wur.nl](mailto:application.studentexchange@wur.nl)

[www.wur.nl/exchange](http://www.wur.nl/exchange)

---