



## PARTNER UNIVERSITY FACT SHEET

### Student exchange programmes

#### General information

➤ <b>Name of institution &amp; abbreviation</b>	Universidad del País Vasco/ Euskal Herriko Unibertsitatea (UPV/EHU) University of the Basque Country
➤ <b>Website</b>	<a href="http://www.ehu.eus">www.ehu.eus</a>
➤ <b>Erasmus code of institution</b>	EBILBAO01
➤ <b>OID</b>	E10208839

#### International Relations Office (IRO)

➤ <b>Address of IRO</b>	International Relations Office Vice Rectorate for Basque, Culture and Internationalization Central library building, floor 2 Barrio Sarriena s/n 48940 Leioa, SPAIN <a href="mailto:internacional@ehu.eus">internacional@ehu.eus</a>
➤ <b>Website for visiting students</b>	<a href="http://www.ehu.eus/en/web/nazioarteko-harremanak/en-exchange-students">www.ehu.eus/en/web/nazioarteko-harremanak/en-exchange-students</a>

#### Agreements for students, teaching and staff exchange

Programme	Contact person	Contact data
<b>International networking</b>	<b>Bryan Leferman</b> Director for international mobility <a href="mailto:director.internacional@ehu.eus">director.internacional@ehu.eus</a> Tel: +34 946012165	Vice Rectorate for <b>Basque, Culture and Internationalization</b> Rectorate building Barrio Sarriena s/n 48940 Leioa, SPAIN Tel: +34 946012040
<b>Outside ERASMUS+</b> (Latinamerca, USA, Canada, Russia, Asian countries)	Juan Carlos Castillo <a href="mailto:juancarlos.castillo@ehu.eus">juancarlos.castillo@ehu.eus</a> Tel: +34 94601 2166	International Relations Office Leioa Library building, floor 2 Barrio Sarriena s/n 48940 Leioa, SPAIN Tel: +34 6017903
<b>SICUE</b> (Exchanges among Spanish universities)	Irantzu Sologuren <a href="mailto:seneca@ehu.eus">seneca@ehu.eus</a> Tel: +34 946012089	
<b>Erasmus + Bilateral agreements Staff exchange</b>	<b>Ms Idoia Ortiz de Landaluce</b> <a href="mailto:agreements.internacional@ehu.eus">agreements.internacional@ehu.eus</a> <a href="mailto:staff.internacional@ehu.eus">staff.internacional@ehu.eus</a> Tel: +34 943018136	International Relations Office Donostia-SS Ignacio M <sup>a</sup> Barriola Elhuyar Plaza, 1 20118 Donostia - San Sebastian

## \*Academic calendar

(\*Further details on our academic calendar to be found on the website of the relevant faculty / school)

	Autumn/First semester	Spring/Secondsemester
➤ Lessons starting date	Early September	End of January
➤ Lessons end date	Mid January	Mid May
➤ Examinations period	January	May/June (retakes)

## Application and registration procedures

<b>Application documents</b>	1. Copy of Passport/ID 2. Application form (downloaded from website) 3. Learning agreement proposal (a temporary form should be filled in prior to arrival; the final LA will be signed upon arrival at the University of the Basque Country)					
	<b>ERASMUS+</b>	The above mentioned documents should be handed in to the school/faculty coordinator at the University of the Basque Country <a href="https://www.ehu.eus/en/web/nazioarteko-harremanak/en-coordinators-contact">https://www.ehu.eus/en/web/nazioarteko-harremanak/en-coordinators-contact</a>				
	<b>Outside ERASMUS+</b>	All documents sent to: <a href="mailto:incoming.internacional@ehu.eus">incoming.internacional@ehu.eus</a>				
<b>Online registration</b>	Once processed the application the student will receive an invitation to an online registry that is required to issue the acceptance. <a href="http://www.ehu.eus/en/web/nazioarteko-harremanak/en-exchange-students">www.ehu.eus/en/web/nazioarteko-harremanak/en-exchange-students</a>					
<b>UPV/EHU Registration</b>	After arriving at the UPV/EHU, with the registration form, these documents will be delivered for registration: <table style="width: 100%; border: none;"> <tr> <td style="width: 50%;">1. Proof of Medical insurance</td> <td style="width: 50%;">3. Copy of passport/ID</td> </tr> <tr> <td>2. Copy of enrolment form at home university</td> <td>4. 3 passport-size photos</td> </tr> </table> Application forms: <a href="http://www.ehu.eus/en/web/nazioarteko-harremanak/en-exchange-students">www.ehu.eus/en/web/nazioarteko-harremanak/en-exchange-students</a>		1. Proof of Medical insurance	3. Copy of passport/ID	2. Copy of enrolment form at home university	4. 3 passport-size photos
1. Proof of Medical insurance	3. Copy of passport/ID					
2. Copy of enrolment form at home university	4. 3 passport-size photos					
For information regarding <b>academic matters</b>	Contact your academic coordinators at your faculty/school at the University of the Basque Country	List of coordinators: <a href="https://www.ehu.eus/en/web/nazioarteko-harremanak/en-coordinators-contact">https://www.ehu.eus/en/web/nazioarteko-harremanak/en-coordinators-contact</a>				

## Courses at the University of the Basque Country

➤ <b>Courses/programmes open to visiting students</b>	- Visit website for the faculty/school you will be visiting. - Ask your academic coordinator at the department you will be visiting.
➤ <b>Courses taught in English</b>	Visit website: <a href="http://www.ehu.eus/en/web/nazioarteko-harremanak/en-coordinators-contact">www.ehu.eus/en/web/nazioarteko-harremanak/en-coordinators-contact</a>
➤ <b>Study areas restricted to exchange students</b>	Medical studies: check possibilities and restrictions with academic coordinator



## Spanish and Basque courses for visitors

<p>➤ <b>Spanish and Basque courses</b></p>	<p>Fall:Septemberto December; Spring:JanuarytoMay Duration: Fall and Spring semesters Intensive Spanish course: late August</p> <p>Venue:Campusof Alava,Biscay&amp; Gipuzkoa</p>
<p>➤ <b>Further information</b></p>	<p><a href="https://www.ehu.eus/en/web/nazioarteko-harremanak/en-available-courses">https://www.ehu.eus/en/web/nazioarteko-harremanak/en-available-courses</a></p>

## Cost of living

<p>➤ <b>Average monthly expenses (in euros)</b></p>	<p>Accommodation</p>	<p>350-500 euros</p>
	<p>Food</p>	<p>250-300 euros</p>
	<p>Transport</p>	<p>35 euros</p>
	<p>Academic material</p>	<p>--</p>
	<p>Miscellaneous</p>	<p>100 euros</p>
	<p><b>TOTAL/MONTH</b></p>	<p>735-935 euros</p>

## Accommodation for visiting students

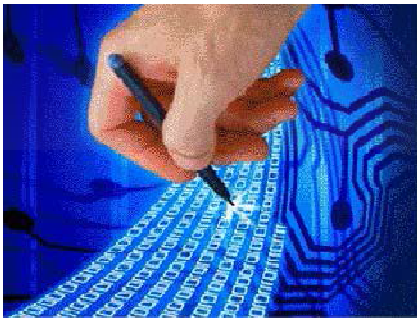
	<p>Most visitors choose to live in shared, rented flats in the city centres or in family stays. There are also university and private student residences where visitors can settle.</p>
<p>➤ Who can help you? <b>Help Centres</b></p> <p>➤ Open: August to October; January to March</p> <p>➤ Uninterrupted online assistance</p>	<p><b>Campus of Alava</b> <a href="mailto:helpcentre1.internacional@ehu.eus">helpcentre1.internacional@ehu.eus</a> University Pavillion; Los Apraiz 1 Vice Rectorate of the Campus of Alava Comandante Izarduy, 2 01006 Vitoria-Gasteiz Tel: +34 945 014334</p> <p><b>Campus of Biscay (Leioa)</b> <a href="mailto:helpcentre2.internacional@ehu.eus">helpcentre2.internacional@ehu.eus</a> Central Library building, floor 2 Barrio Sarriena s/n – 48940 Leioa-Erandio Tel: +34 946 015868</p> <p><b>Campus of Biscay (Bilbao)</b> <a href="mailto:helpcentre3.internacional@ehu.eus">helpcentre3.internacional@ehu.eus</a> Higher Technical School of Engineering Desk P1G11 Pza Ingeniero Torres Quevedo 1, 48013 Bilbao Tel: +34 946 017365</p> <p><b>Campus of Gipuzkoa (Donostia-San Sebastián)</b> <a href="mailto:helpcentre4.internacional@ehu.eus">helpcentre4.internacional@ehu.eus</a> Ignacio María Barriola building, floor 1 Plaza Elhuyar, 1 – 20018 Donostia-SS Tel: +34 943 015192</p>

### Medical insurance

➤ Medical insurance

- **EU countries:** students need to get their European Health Card at country of origin.
- **Non EU countries:** visitors from outside Europe need to purchase a medical insurance in force throughout their stay at the University of the Basque Country.

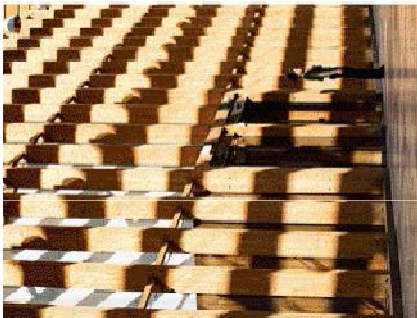
### University of the Basque Country, photo gallery



Escuela de Ingeniería



Centro Carlos Santamaría



Vistasgenerales Area Leioa-Erandio

